

Lisa2-Pin-XP-G miniature lens for Cree XP-G series of LEDs



- Lens material optical grade PMMA with high UV and temperature resistance (105°C/220°F). Lens holder molded of high quality black PC.
- High optical efficiency, up to 90%.
- Integrated holder with small position pins, see drawing below for more details. Fastening of holden to PCB with appropriate adhesive, e.c. epoxy or polyurethane based. NOTE: DO NOT USE SUPERGLUE.
- Very small and compact dimensions: Diameter 9.9 mm, height 6.8 mm

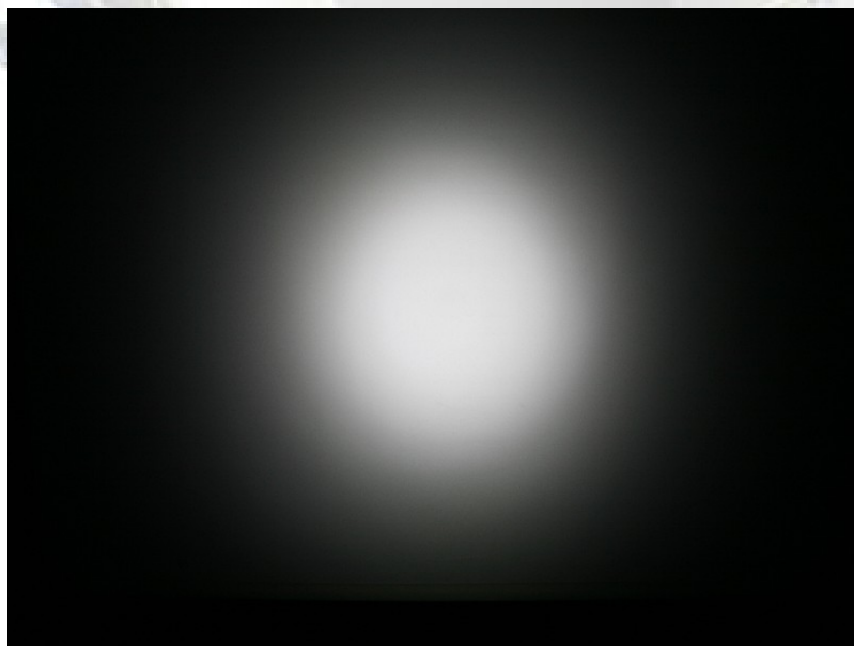
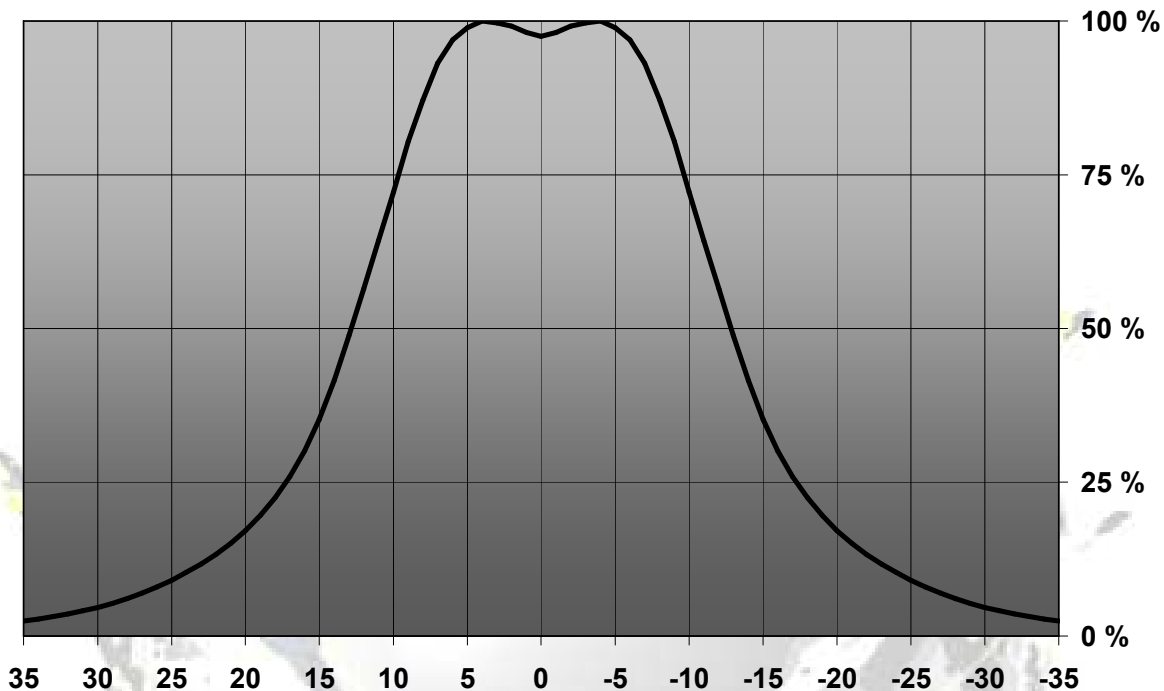
LENS TYPES

NAME	ORDERING CODE	FWHM Angle
Lisa2-Pin Real Spot	FA11055_Lisa2-RS-Pin-XP-G	±13°
Lisa2-Pin Medium	FA10995_Lisa2-M-Pin-XP-G	±17°
Lisa2-Pin Oval	FA11125_Lisa2-O-Pin-XP-G	~±5° x ~16°
Lisa2-Pin Wide	FA10996_Lisa2-W-Pin-XP-G	±24°

~ results are based on simulation value.

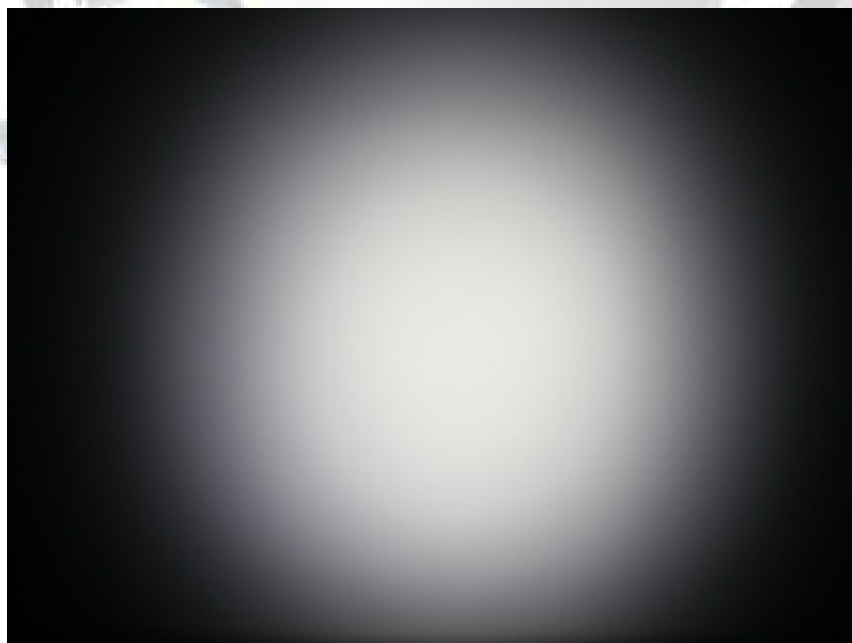
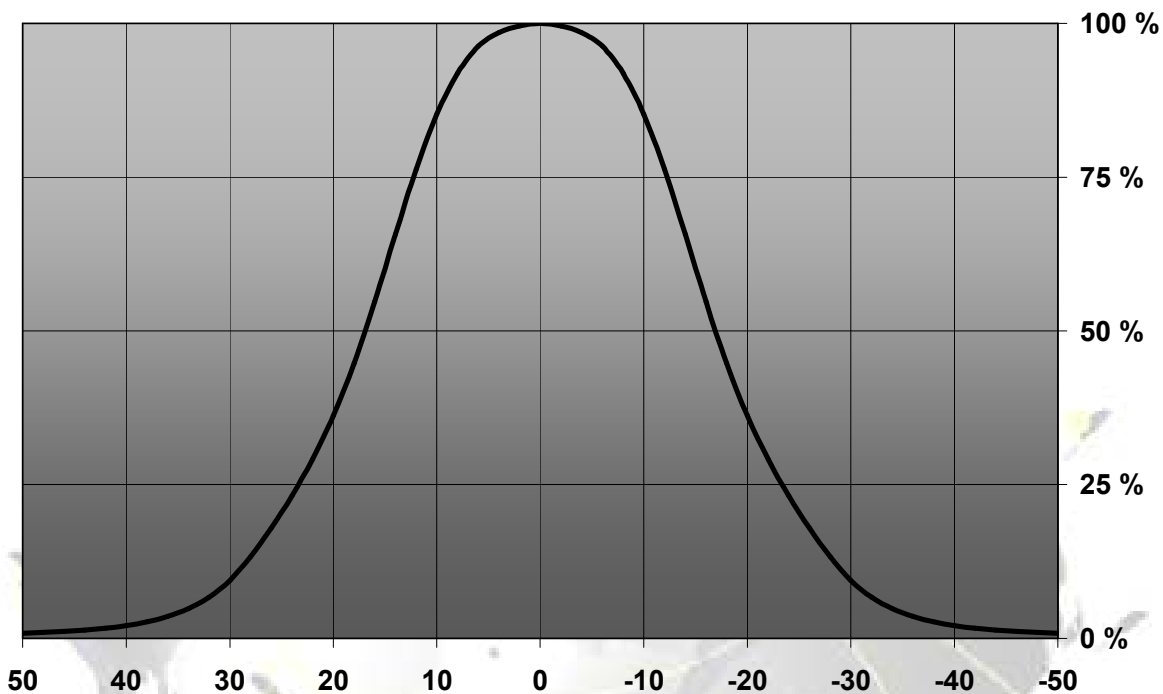
MEASUREMENT DATA

Relative Intensity of FA11055_Lisa2-RS-Pin-XP-G



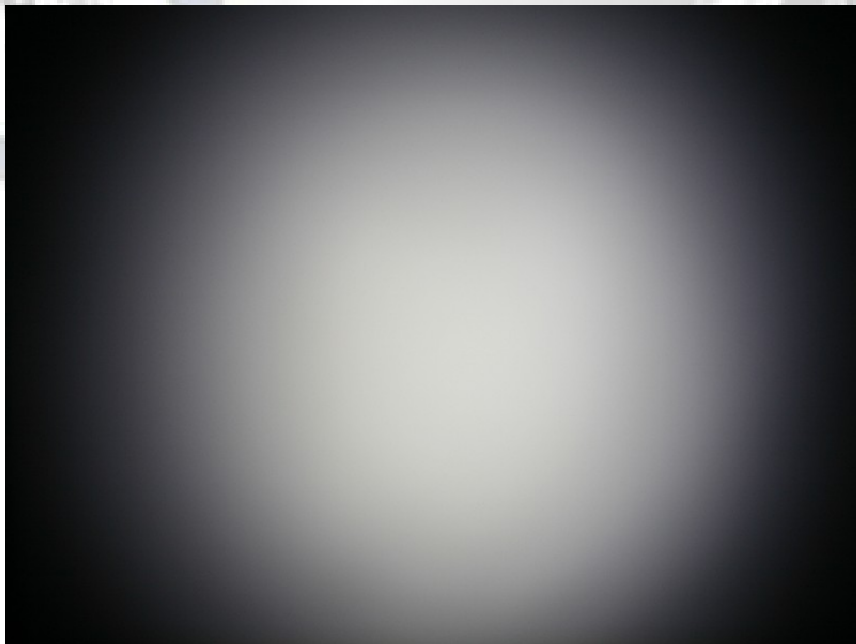
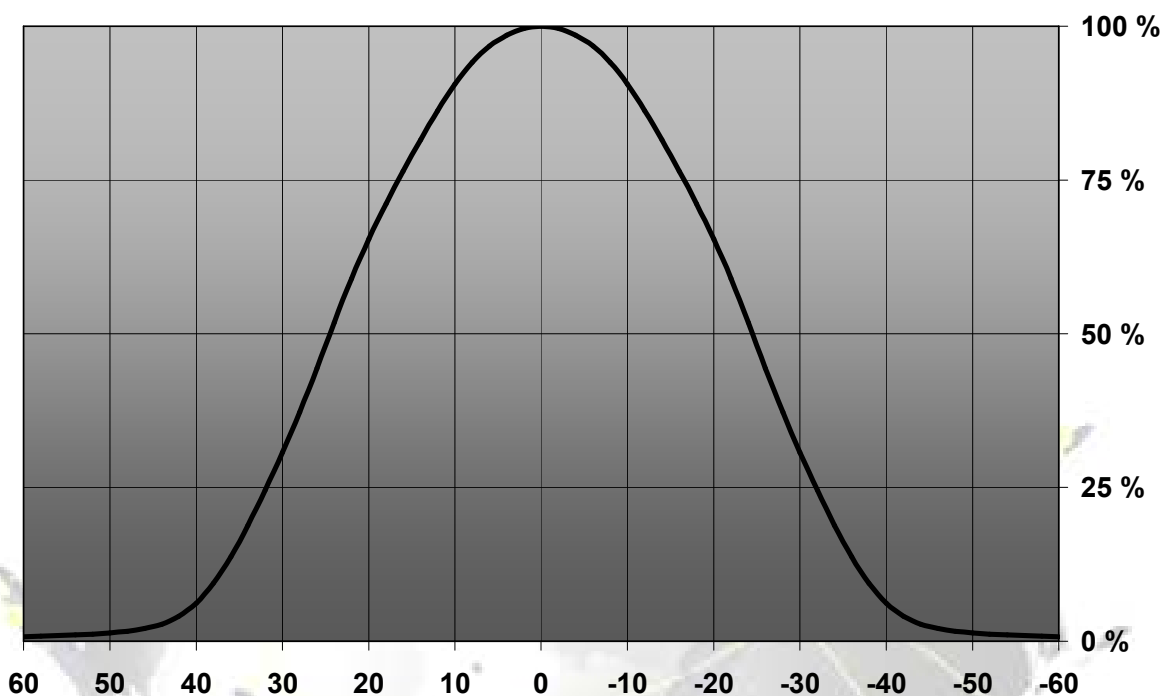
© Ledil Oy – PRELIMINARY - Subject to change without prior notice

Relative Intensity of FA10995_Lisa2-M-Pin-XP-G



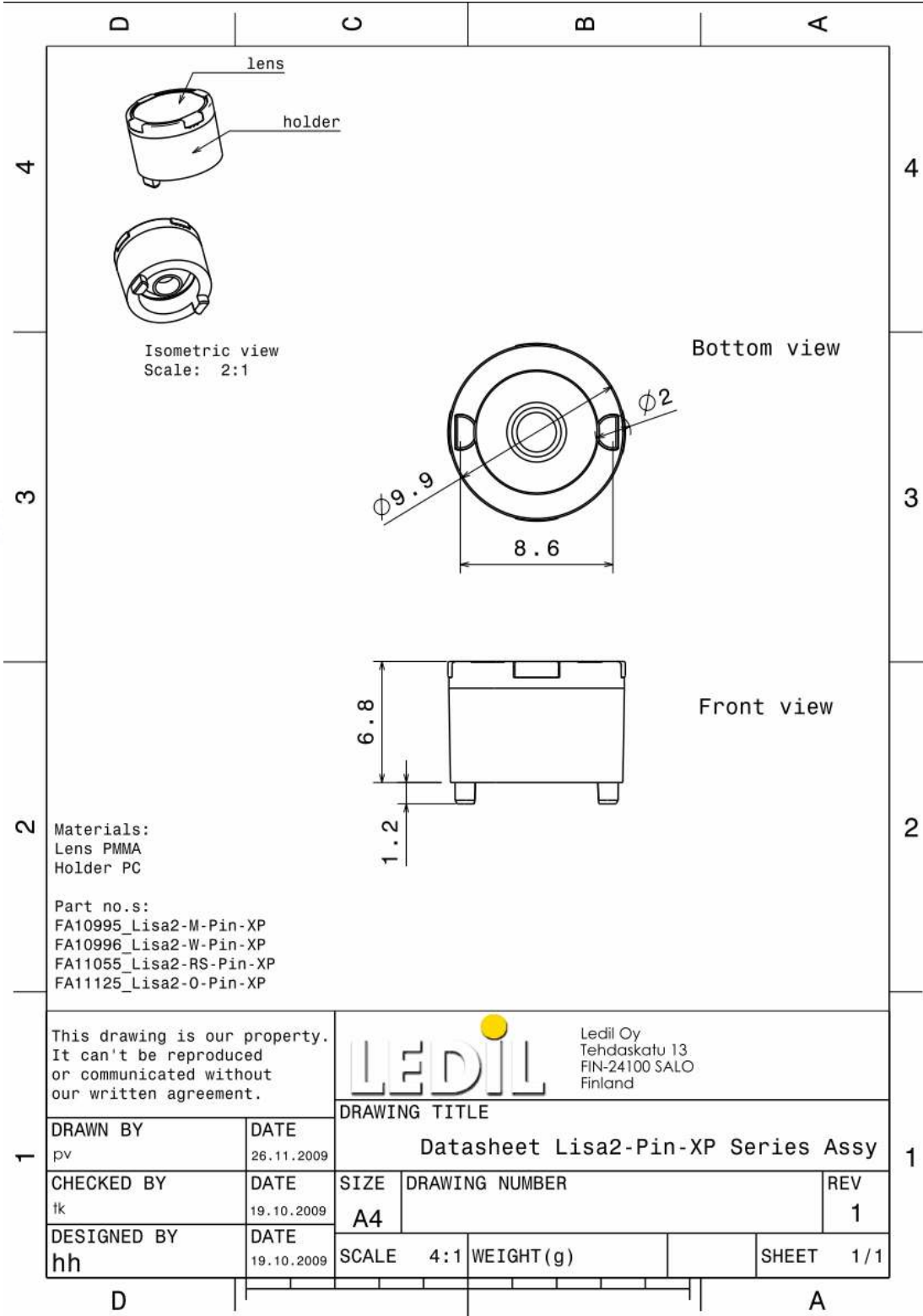
© Ledil Oy – PRELIMINARY - Subject to change without prior notice

Relative Intensity of FA10996_Lisa2-W-Pin-XP-G



© Ledil Oy – PRELIMINARY - Subject to change without prior notice

DRAWINGS



© Ledil Oy – PRELIMINARY - Subject to change without prior notice